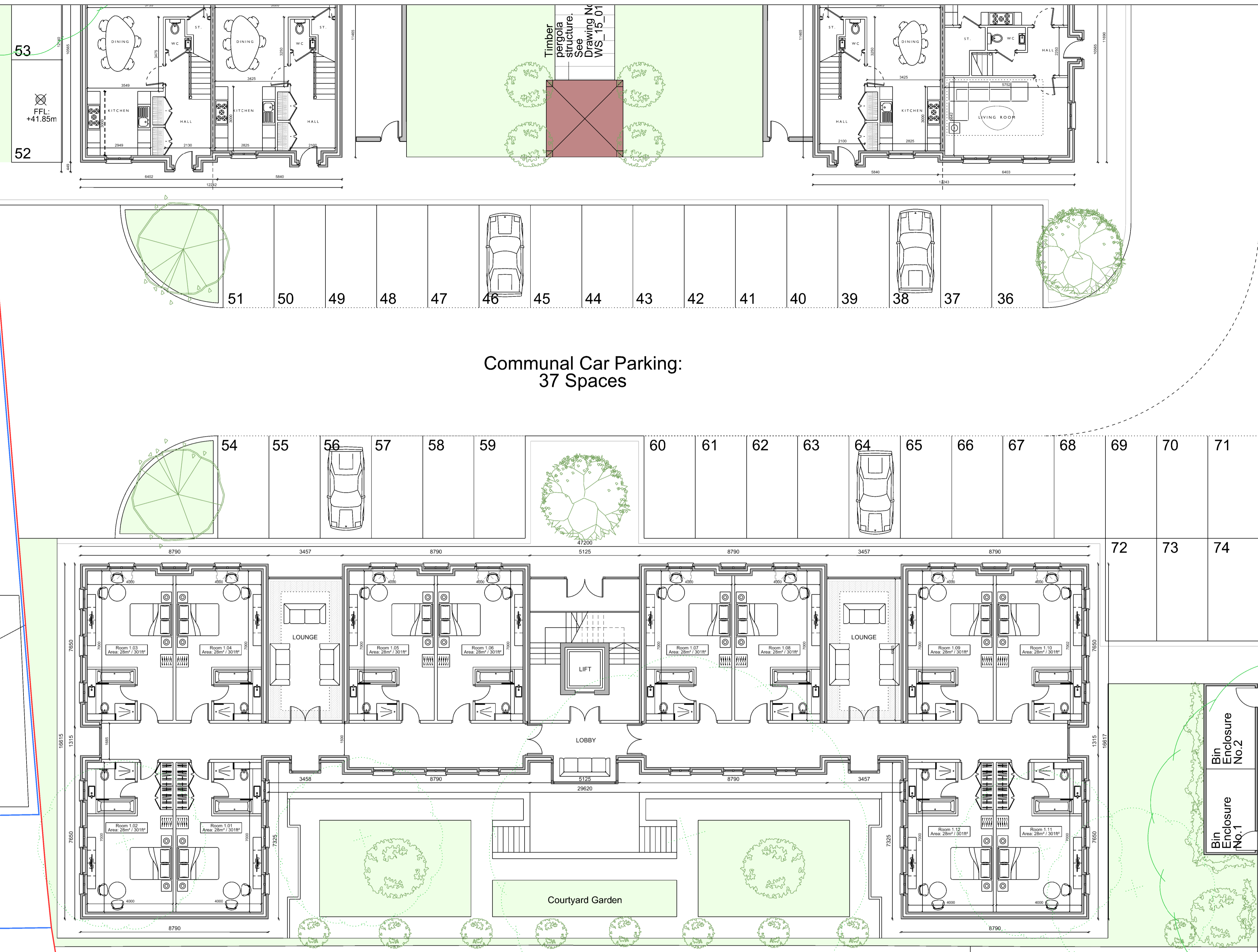


Copyright for this drawing is reserved in the Architect and it must not be copied or reproduced without consent. Figures and dimensions only are to be taken from this drawing. All construction must be in accordance with the approved drawings and any variation between drawings and site conditions are to be advised of any variation between drawings and site conditions.

Existing timber fence boundary to be retained.

Existing timber fence boundary to be retained.

random rubble all boundary to bed.



Communal Car Parking:
37 Spaces

REV.	DATE	DETAILS	INITIALS	REV.	DATE	DETAILS	INITIALS	REV.	DATE	DETAILS	INITIALS	REV.	DATE	DETAILS	INITIALS	NORTH POINT:	KEY PLAN:

11-19 Blythe Street, Belfast BT12 3HU, Northern Ireland.
T: +44 (0)28 9082 0900 F: +44 (0)28 9082 0901 WWW.RAPPORTARCHITECTS.COM

rapport
ARCHITECTS

PROJECT:	Residential & Tourist Accommodation at Cillghrian, Slane.	PROJECT NO.:	03627	DATE:	02.03.17
CLIENT:	Land & Heritage Properties Holdings Ltd	DRAWING NO.:	B1_02_01	REVISION:	-
TITLE:	Tourist Accommodation - Upper Ground Floor Plan	DRAWN BY:	NG	SCALE AT A1:	1:100
ISSUE TYPE:	For Planning Application	CHECKED BY:	MG	SCALE AT A3:	1:200